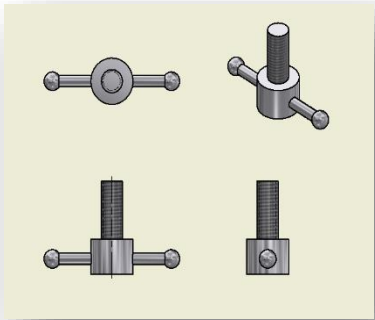
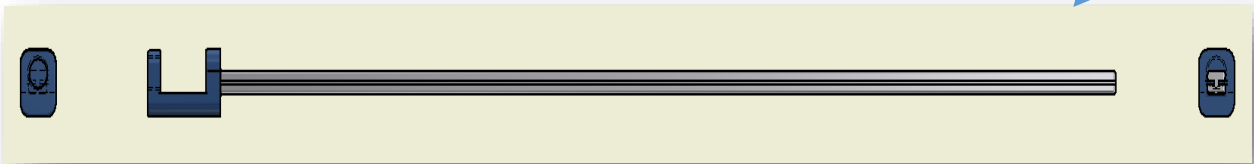


Design by : Joko Endy Wizaya

DESIGN 1



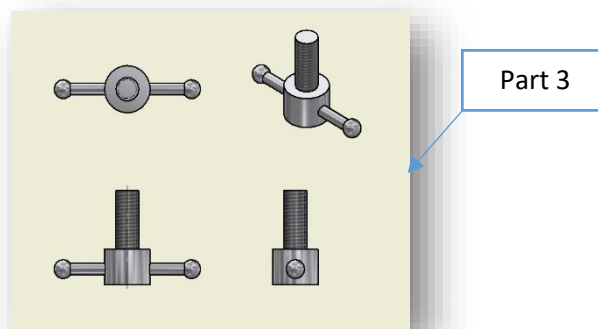
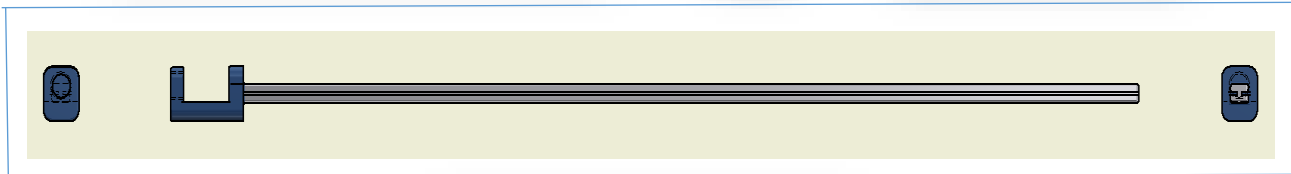
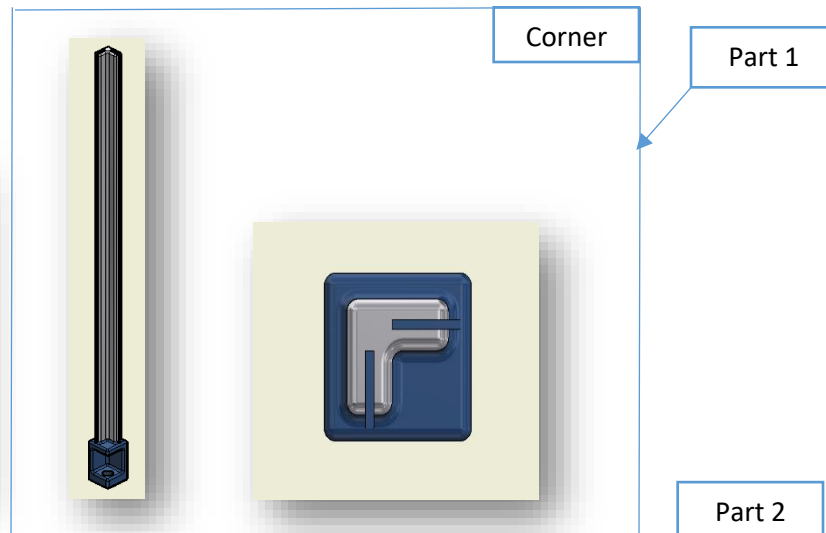
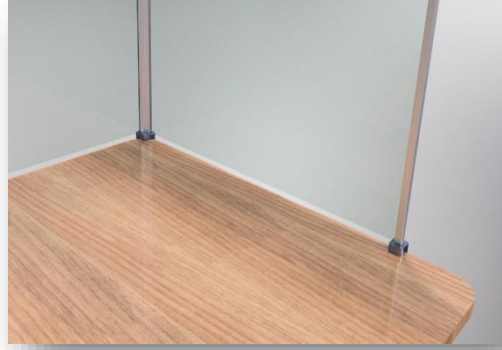
Part 1



Part 2

The above view is a description of application of the second Garry dispersing tool, it requires that each part is 6 equal parts for one table

DESIGN 2



The above view is a description of application of the second Garry dispersing tool, there is a slight difference in design to the first because of the design of the second there is the addition of a new part of the part 1 that is pointless on the corner of each table, and in this design I make it more efficient because 1 table only requires part 1 = 2 pieces , Part 2 = 2 pieces and Part 3 = 4 pieces, and **the components of these tools can be created using 3d printing to save more**